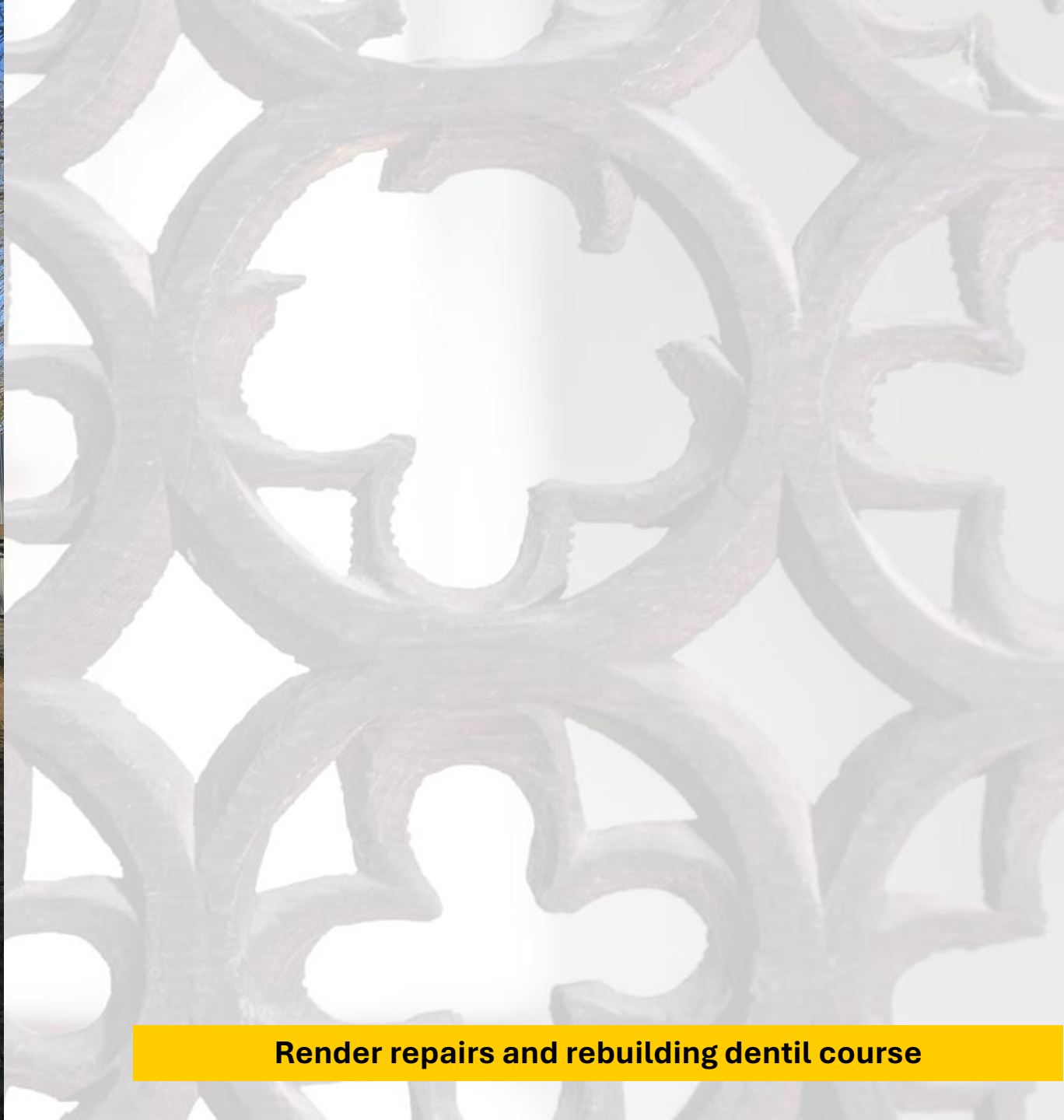




South Runcton



South Runcton, December 2025



Render repairs and rebuilding dentil course



Stone indents on west front





Interior – natural light



Interior – natural light



Drainage being laid



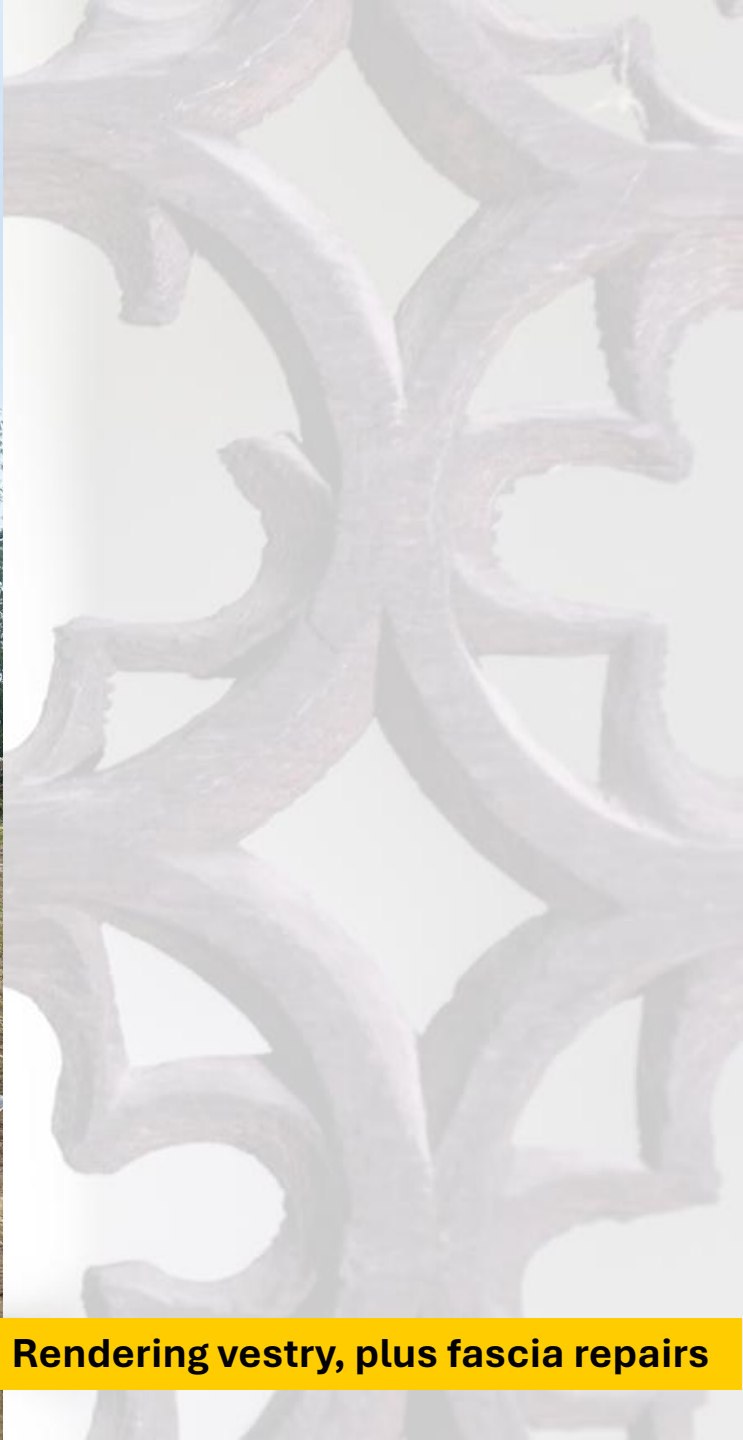
New stainless steel roof to vestry



Brownshill



Redecorating in distemper



Rendering vestry, plus fascia repairs





Interior



Interior



Interior



East Hatley



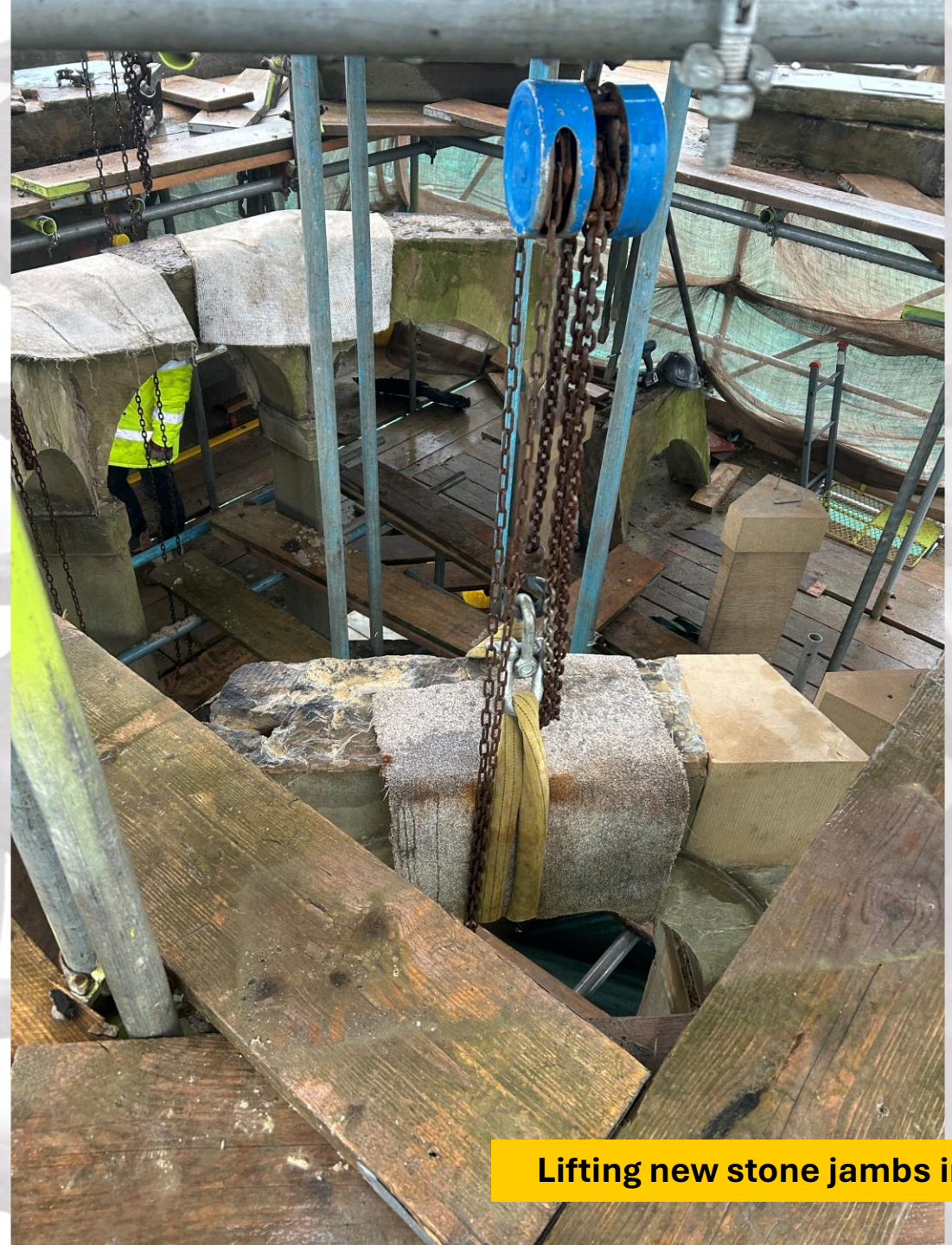
Scaffold at E end



Tracery -missing and out of alignment



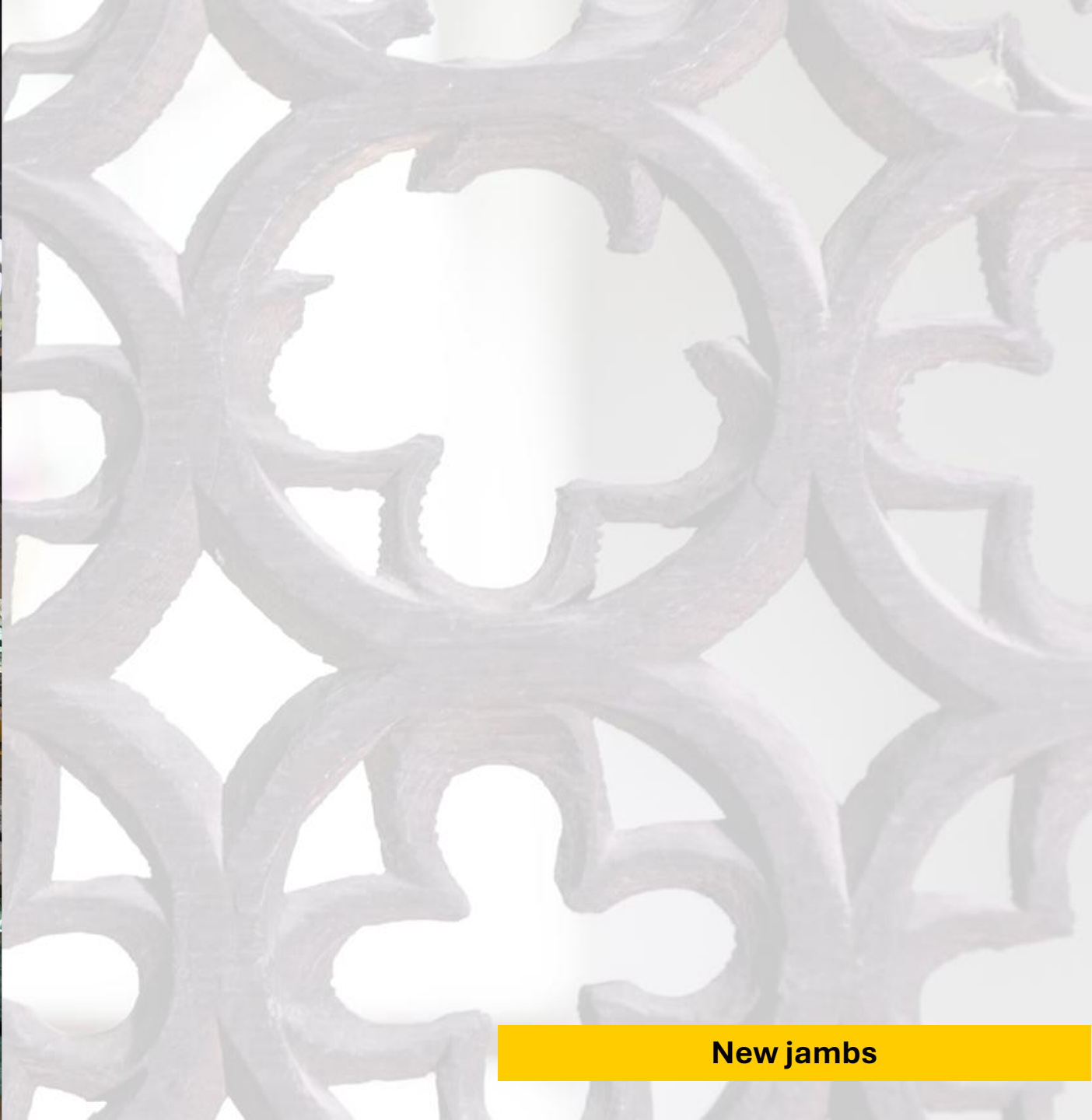
Lightcliffe



Lifting new stone jambs into place



Fixings



New jambs



Lantern re-assembled. 3no. New arches needed.



Clock face – opportunity to repaint?



Kenderchurch



Interior – re-plastered, awaiting additional 2no. coats of limewash



**Chancel ceiling, replacing boarding where needed.
Close up of bosses.**





Scaffold down – limewashing of exterior ongoing